

**Walsall Council**

**Sandwell**
Metropolitan Borough Council

**Wolverhampton City Council**

**Dudley**
Metropolitan Borough Council

FRAMEWORK CONTRACT FOR HIGHWAY WORKS - MINOR WORKS CONTRACT

STANDARD DETAIL

Drawing Title:
**SAFETY HOOP
(FOR LADDERS)**

DRAWN
GW

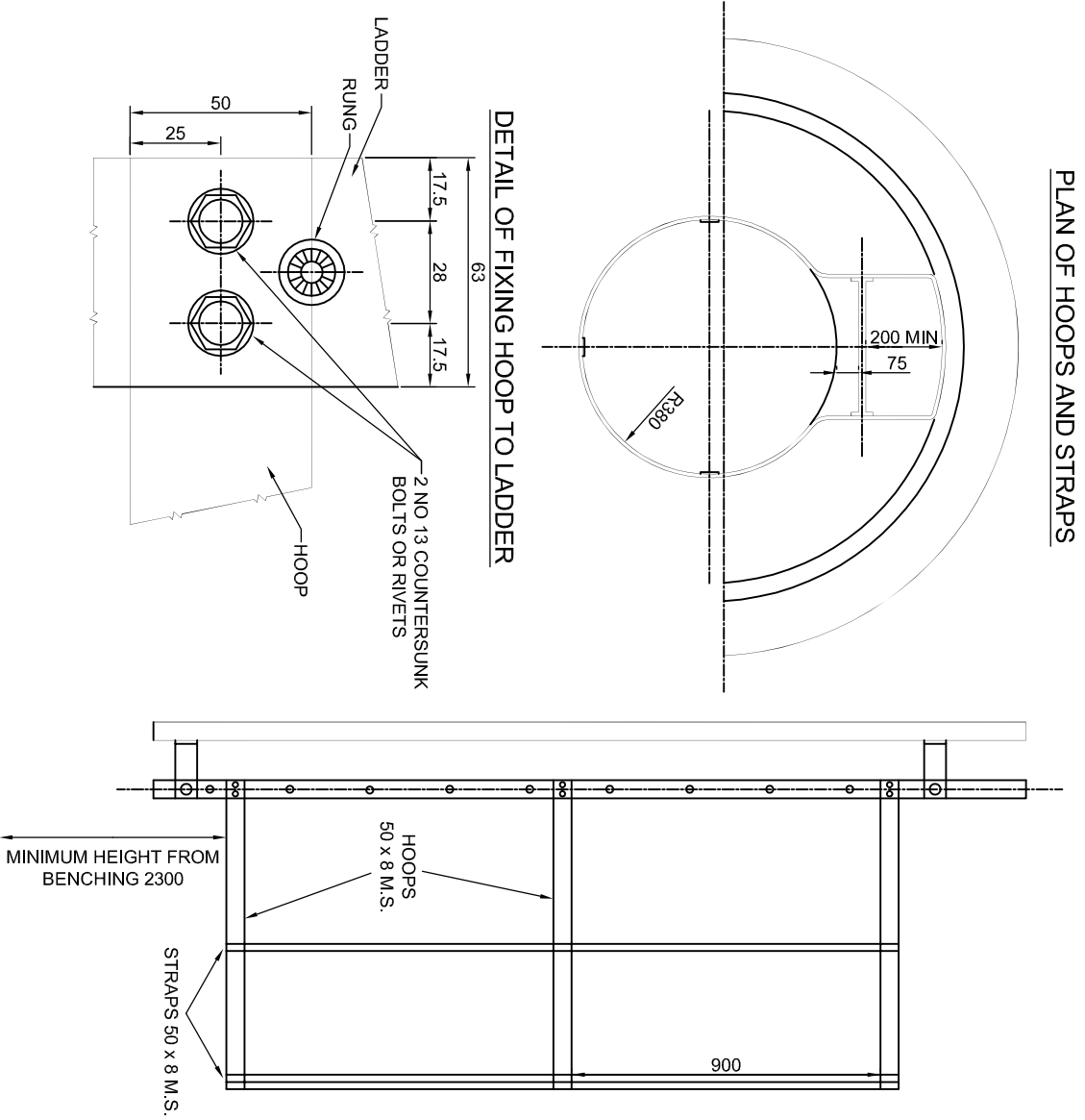
CHECKED
JBF

DATE
JUL/09

SCALE
1 : 20

Drawing Number
SD/500/18

Rev
01



NOTES

- HOOPS SHALL BE FITTED TO LADDERS AT INTERVALS NOT EXCEEDING 900mm WHEN FITTED TO CHAMBERS OR SHAFTS EXCEEDING 1200mm IN DIAMETER.
- MINIMUM OF 3 VERTICAL STRAPS SHALL BE FITTED TO BRACE THE HOOPS.
- HOOPS AND STRAPS SHALL BE FIXED BY RIVETING, BOLTING OR WELDING. IF BOLTS OR RIVETS ARE USED THEY SHALL BE COUNTERSUNK OR CUPHEAD TYPE, INSERTED FROM THE INSIDE OF THE STRAP OR HOOP AND SHALL NOT BE LESS THAN 13mm DIAMETER. THE ASSEMBLY OF HOOPS AND STRAPS SHALL BE SECURED TO THE STRINGERS BY DOUBLE BOLTING, DOUBLE RIVETING OR WELDING.
- ALL THREADED COMPONENTS TO BE SHERADISED.
- ALL WELDS TO BE 6mm FILET WELDS.
- ALL HOOPS, STRAPS AND FITTINGS TO BE FABRICATED FROM STEEL TO BS 970 AND ARE TO BE PROTECTED BY HOT DIP GALVANISING.
- REFER TO HIGHWAY CONSTRUCTION DETAIL DRAWING F10 FOR LADDER.
- ALL DIMENSIONS IN MILLIMETERS.