



**Walsall Council**

**Wolverhampton City Council**

**Dudley**

FRAMEWORK CONTRACT FOR HIGHWAY WORKS - MINOR WORKS CONTRACT

**Sandwell**

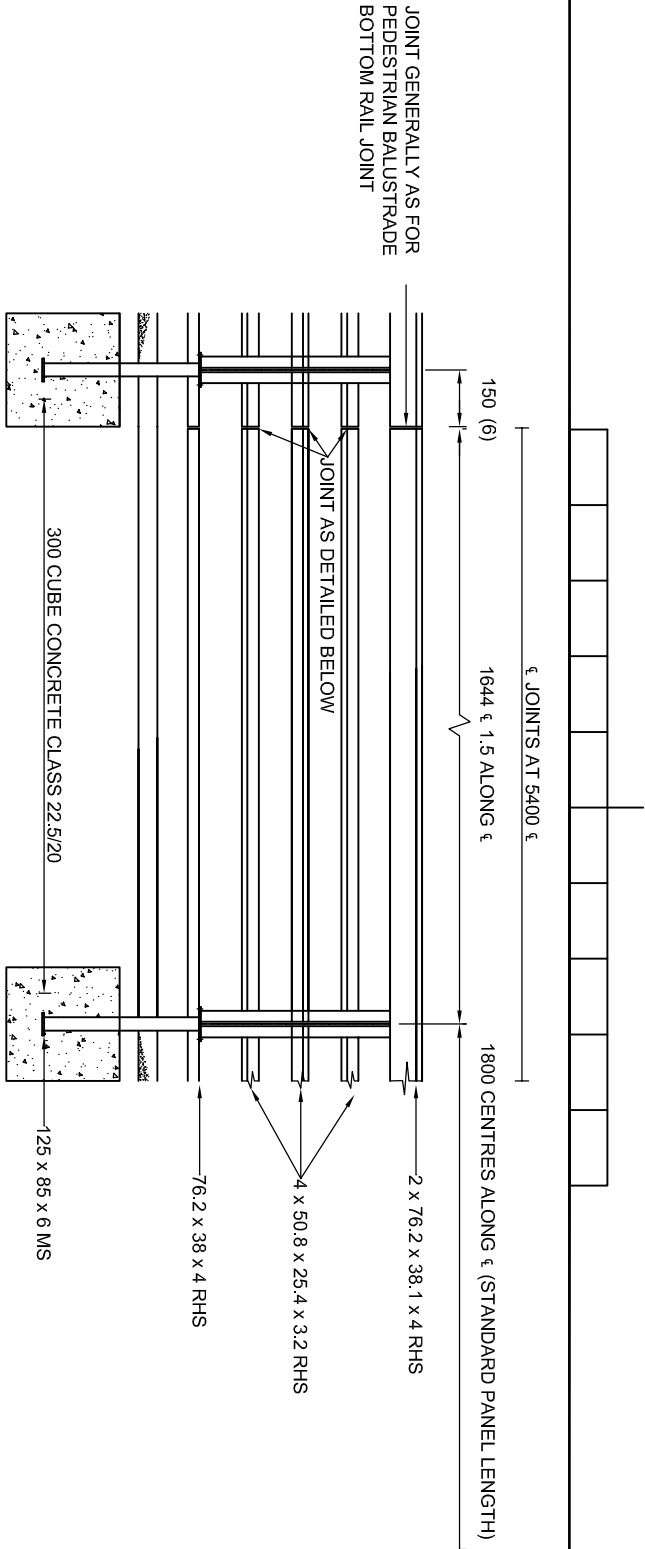
**Regeneration and Transportation**

Drawing Title:
HAYRACK RAILING

DRAWN	TOH	DATE	07/09
CHECKED	JBF	SCALE	1:20

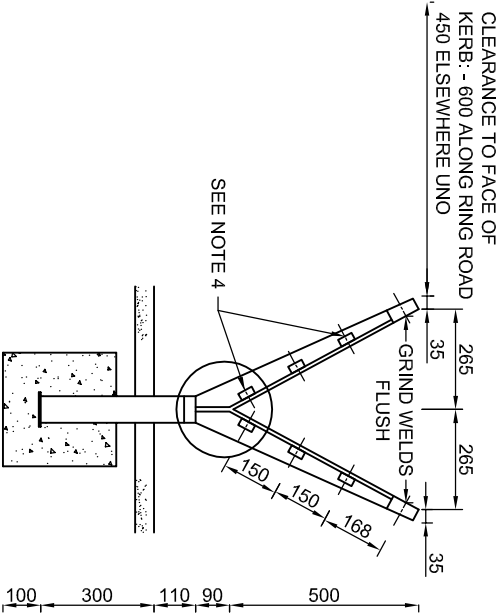
Drawing Number
SD/300/13

Rev
01



ELEVATION

HAYRACK RAILING



SECTION

1. HORIZONTAL MEMBERS AND POST OF RECTANGULAR HOLLOW SECTION (MILD STEEL) ARMS EX R.S.J'S (MILD STEEL) ALL WELDS 6 FILLET (CONTINUOUS)
2. DIMENSIONS SHOW THUS [] ARE GIVEN FOR GUIDANCE ONLY AND THE CONTRACTOR SHALL DEVELOP DIMENSION TO ENSURE A CLOSE FIT
3. JOINING PLATE ARE TO BE OF MILD STEEL RUST PROOFED TO APPROVAL (e.g. ZINC SPRAYED) AFTER FABRICATION
4. 2 No ADDITIONAL 50.8 x 50.8 x 3.2 RHS AS OPPOSITE ARM