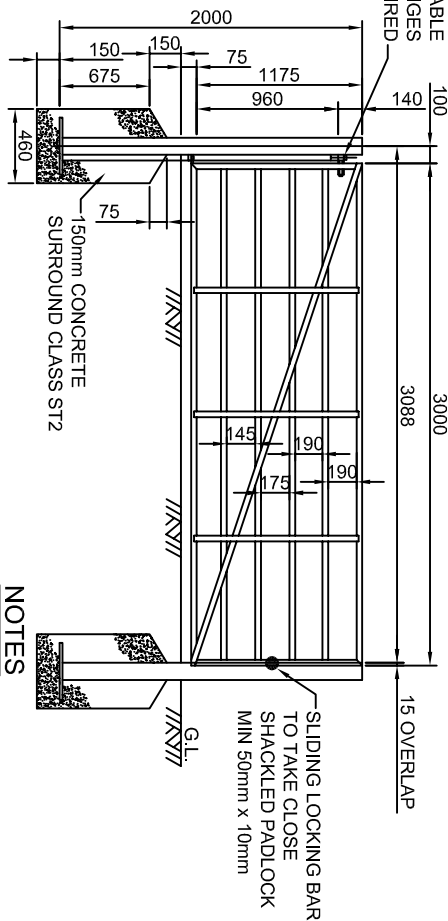


3 METRE WIDE ACCESS GATE

| DESCRIPTION OF MATERIAL | SIZE | FIXING AND FITTING |
|---|---------------|---|
| HANGING POST (TUBULAR STEEL) | 125x125x6 RHS | TOP CLIPPING PLATE 5mm THICK |
| SHUTTING POST (TUBULAR STEEL) | 125x125x6 RHS | BASE PLATE 250 x 250 x 5 CAP AND BASE PLATES TO BE CONTINUOUSLY FUSH WELDED TO TUBE |
| OUTER FRAMES INFILLING HORIZONTAL RAILS (ALL TUBULAR STEEL) | 60x60x3 RHS | |
| VERTICAL BRACES (MILD STEEL FLAT) | 60x60x3 RHS | |
| DIAGONAL BRACES (MILD STEEL FLAT) | 60x60x3 RHS | |

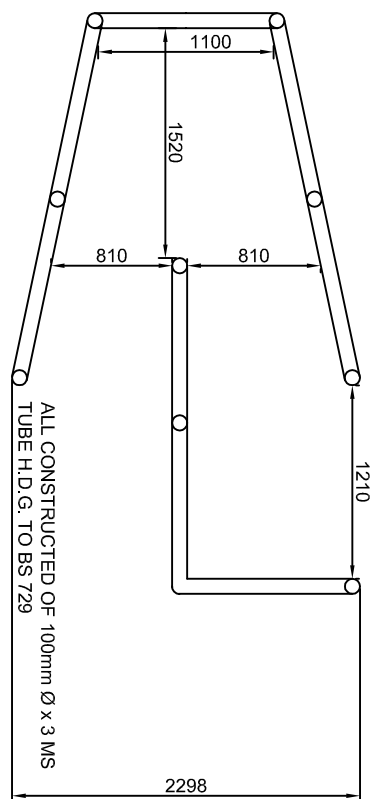
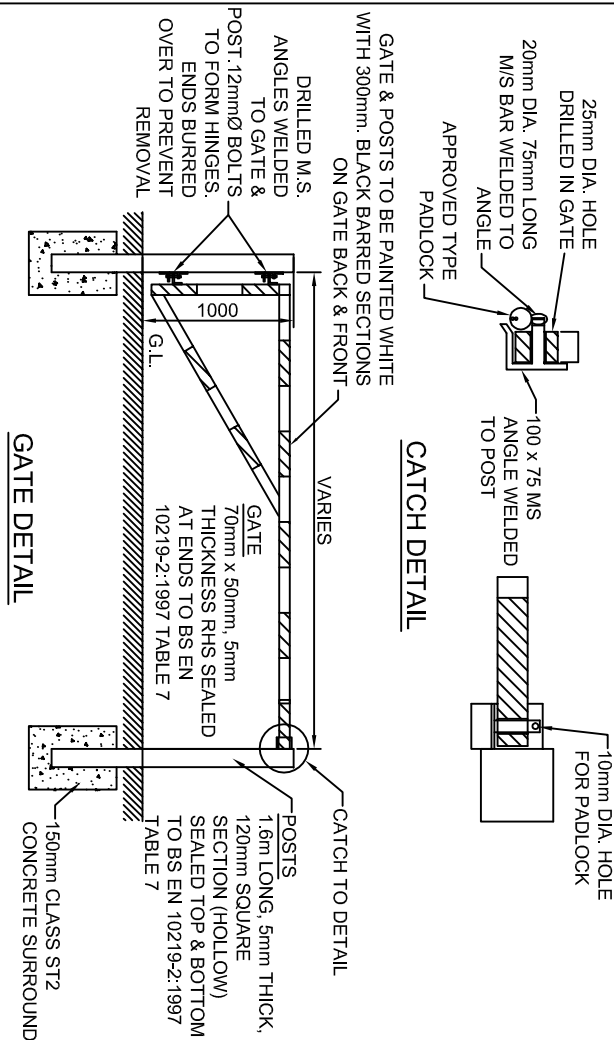
Fillet welded to each gate member crossed by braces



NOTES

1. ALL DIMENSIONS IN MILLIMETRES.
2. GATES SHALL COMPLY WITH BS 3470.
3. THE GATE SHALL OPEN INWARDS.
4. THE CORNERS OF THE MAIN FRAME SHALL BE MITRED (AS DRAWN).
5. PROTECTIVE TREATMENT ALL H.D.G., ETCHED, PRIMED, UNDERCOATED & 2 COATS OF GLOSS RAL 6005.

EMERGENCY ACCESS GATE



PLAN

MOTORCYCLE BARRIER

