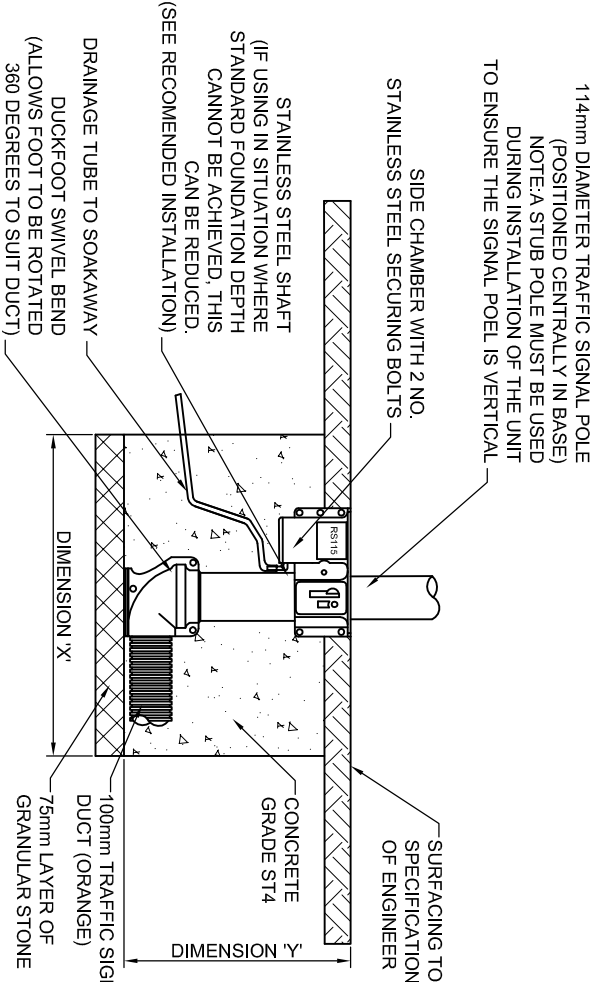


450/600/750/900mm ROOT DETAIL



POSSIBLE ROOT DEPTHS AND  
CORRESPONDING GRANULAR  
STONE WIDTHS

DIMENSION 'X'	DIMENSION 'Y'
680mm	900mm
750mm	750mm
1000mm	450mm
850mm	600mm

RECOMMENDED BASE SPECIFICATION FOR RETENTION SOCKETS IN  
LOW SPEED / SOLID GROUND AREAS 114 mm DIA POST IN LOW RISK  
ARE WITH 300mm OR DIMENSION 'Y' ROOT-

CIVILS INSTALLATION OF RS115 D/F RETENTION SOCKET

1. CONNECT DUCTING FROM REMOTE CHAMBER TO SWIVEL BEND  
ON SOCKET BY TIGHTENING THE TWO WING BOLT FIXINGS.
  2. LEAVE DRAW CORD IN BASE OF SOCKET BEND.
  3. TWIST THE HEAD OF SOCKET TO THE REQUIRED ORIENTATION  
LEVEL
  4. LAY THE DRAINAGE TUBE TO COMPACTED HARDCORE  
(SOAKAWAY)
- LEVELLING USING RS 115 STUMP POLE

1. REMOVE THE PEDESTRIAN PLUG
2. PLACE THE STUMP POLE INTO THE SOCKET (ENSURE THE TWO  
STAINLESS STEEL BOLTS DO NOT OBSTRUCT THE STUMP POLE  
FROM ENTERING THE SOCKET).
3. TIGHTEN THE TWO 16mm STAINLESS STEEL BOLTS AGAINST  
THE STUMP POLE MAKING SURE THAT THE STUMP POLE IS IN A  
VERTICAL POSITION
4. USE THE STUMP POLE TO ACHIEVE A VERTICAL LEVEL.  
NEVER LEVEL THE SOCKET FROM THE HEAD OF THE SOCKET  
OR USING A PIECE OF DUCTING.
5. ONCE VERTICAL LEVEL IS ACHIEVED COMPACT THE CONCRETE.
6. ONCE CONCRETE HAS BEEN COMPACTED AND HAS BEGUN TO  
CURE CAREFULLY REMOVE STUMP POLE AND LOCK THE  
CIRCULAR DUCTILE IRON PLUG IN PLACE BY TIGHTENING THE 16  
MM BOLTS IN THE LOCKING CHAMBER.
7. REPLACE THE LOCKING CHAMBER LID AND SECURE IN  
POSITION.
8. FINISH FOOTWAY WITH REQUIRED SURFACE WHEN CONCRETE  
HAS CURED.

FOR FURTHER ASSISSTANCE PLEASE CONTACT NAL LTD.  
01905 769 713 OR SALES@NAL.LTD.UK

FRAMEWORK CONTRACT FOR HIGHWAY WORKS - MINOR WORKS CONTRACT



STANDARD DETAIL

Drawing Title:  
LOW SPEED/SOLID GROUND AREA  
INSTALLATION DETAIL

DRAWN	RAP	DATE	AUG/09
CHECKED	JBF	SCALE	1:20

Drawing Number	Rev
SD/2200/06	01