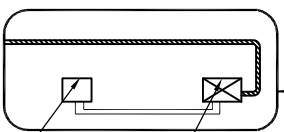


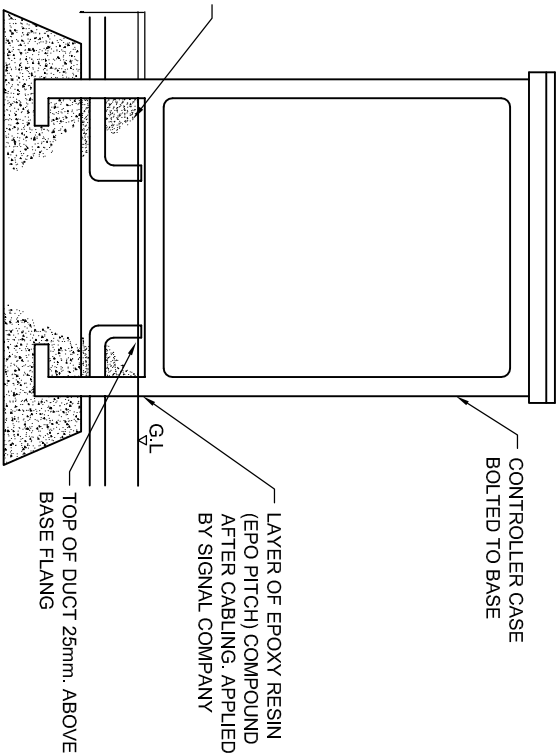
FEEDER PILLAR FOR SIGNAL CONTROLLER CABINET



- ## NOTES
1. FEEDER PILLAR TO BE EARTH BONDED.
 2. FEEDER PILLAR TO BE POSITIONED AT BACK OF FOOTWAY OR AS FAR FROM CARRIAGEWAY AS POSSIBLE.
 3. COLOUR TO BE GREY.
 4. WARNING LABEL TO B.S. 5378 TO BE MOUNTED ON FEEDER PILLAR.

FEEDER PILLAR - SPECIFICATION

1. FABRICATED FROM 3mm M/S STEEL.
2. BODY AND DOOR CORNERS ALL RADIOUS AT 17mm.
3. DOOR APERTURE LINED TO PREVENT RAIN INGRESS.
4. DOOR TO BE FITTED WITH SECURITY LOCK.
5. FUSEBOARD TO BE OF 12mm EXTERNAL GRADE PLYWOOD
6. BODY AND DOOR TO BE HOT GALVANISED TO B.S.729.



- 50mm. DUCT WITH SEALING CAP
INSTALLED TO REAR OF CABINET TO
BE OMITTED IF BRITISH TELECOM
CABLE HAS BEEN INSTALLED PRIOR
TO THE SIGNAL COMPANY APPLYING
BASE SEAL.
- CONCRETE 1/3 UP
LEGS OF BASE. SIDES
TO BE SLOPED.

SIGNAL CONTROLLER AND MISCELLANEOUS EQUIPMENT CABINET

NOTES

1. CABINET TO BE EARTH BONDED TO ANY METALLIC STREET FURNITURE WITHIN 2m.
2. CABINET TO BE LEVEL.
3. CABINET TO BE POSITIONED AT BACK OF FOOTWAY OR FURTHER FROM CARRIAGEWAY IF POSSIBLE.
4. 1200mm MIN CLEARANCE FOR DOOR.
5. COLOUR TO BE GREY.

FRAMEWORK CONTRACT FOR HIGHWAY WORKS - MINOR WORKS CONTRACT



Walsall Council



Wolverhampton
City Council



Dudley
Metropolitan Borough Council

Drawing Title:

STANDARD DETAIL

FEEDER PILLAR AND SIGNAL CONTROLLER CABINET

DRAWN	ID	DATE	JUL/09
CHECKED	JBF	SCALE	NTS

Drawing Number

SD/1200/18

Rev
01