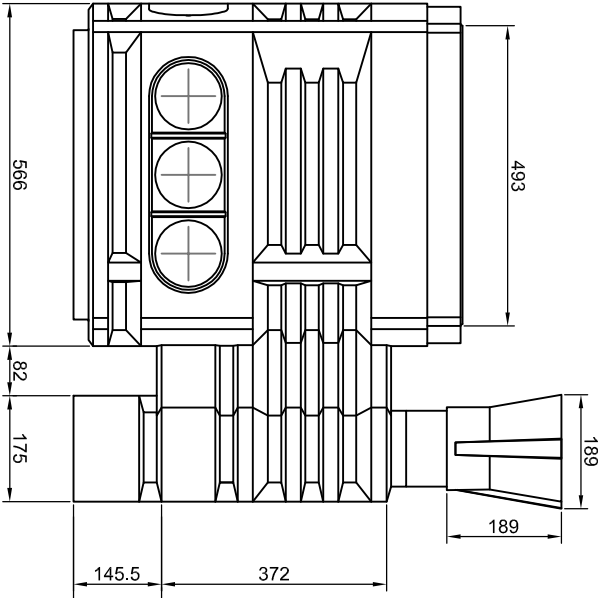
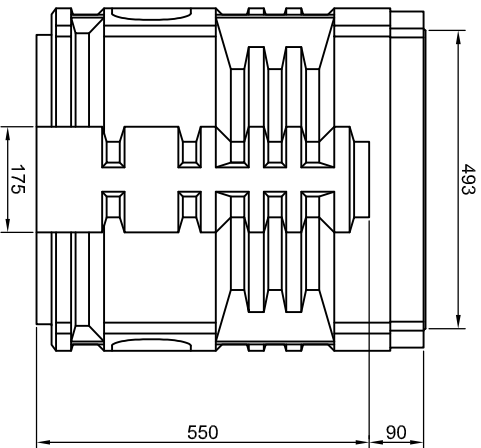


END ELEVATION

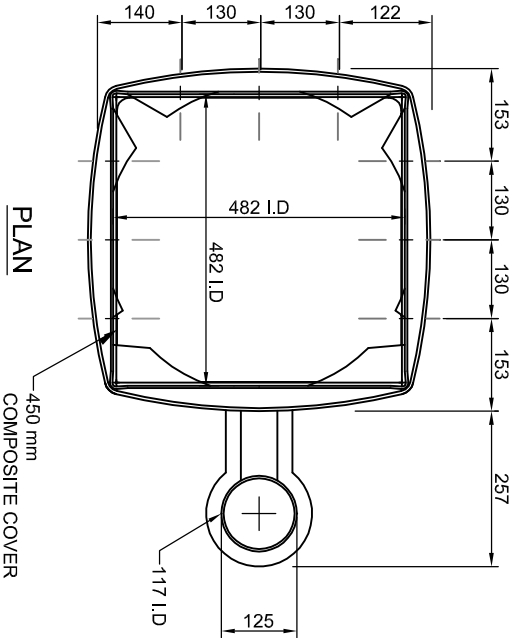


SIDE ELEVATION



END ELEVATION

SPECIFICATION CLAUSE  
THE POLE BOX SHALL BE OF ONE-PIECE CONSTRUCTION AND ROTATIONALLY MOULDED. THE BOX SHALL MEET THE HIGHWAY REGULATION OF 450mm COVER OVER DUCTING PIPE. THE POLE BOX SHALL PRE-TREPANED KNOCKOUT AREAS TO ACCEPT (50mm/100mm) INTERNAL DIAMETER DUCTING. THE POLE BOX MUST BE CAPABLE OF INSTALLATION PRIOR TO POLE FIXING AND INSTALLED TO MANUFACTURERS DETAILS.



PLAN

- NOTES
1. POLE BOXES SHALL BE SURROUNDED WITH 150 mm OF CONCRETE MIX ST2 AND BE SUPPORTED ON A SIMPLE CONCRETE FOOTING APPROXIMATELY 150 mm THICK WITH A SOAKAWAY OF 6 mm CLEAN STONE IF REQUIRED.
  2. TO ENSURE TRAFFIC SIGNAL POLES AND POLE BOX ARE BOTH VERTICAL AND SECURE, THEY MUST BE INSTALLED TOGETHER AND SURROUNDED IN CONCRETE.
  3. POLES SHOULD BE SECURED WITH CONCRETE AT PAVEMENT LEVEL, WHICH WILL BE APPROXIMATELY 150 mm DEEP.
  4. THE BASE OF THE POLE SLEEVE CAN BE TRIMMED OFF IF REQUIRED TO PROVIDE ADDITIONAL SECURITY TO THE POLE.
  5. ALL DIMENSIONS ARE IN MILLIMETRES.

FRAMEWORK CONTRACT FOR HIGHWAY WORKS - MINOR WORKS CONTRACT



STANDARD DETAIL

Drawing Title:  
TRAFFIC SIGNAL POLE  
HOUSING UNIT

DRAWN	RAP	DATE	JUL/09
CHECKED	JBF	SCALE	N.T.S

Drawing Number	Rev
SD/1200/08	01