



**Walsall Council**

**Wolverhampton City Council**

**Dudley Metropolitan Borough Council**

**Sandwell Metropolitan Borough Council**

**Regeneration and Transportation**

STANDARD DETAIL

TRAFFIC SIGNAL POLE DETAILS

DRAWN

RAP

DATE

JUL/09

CHECKED

JBF

SCALE

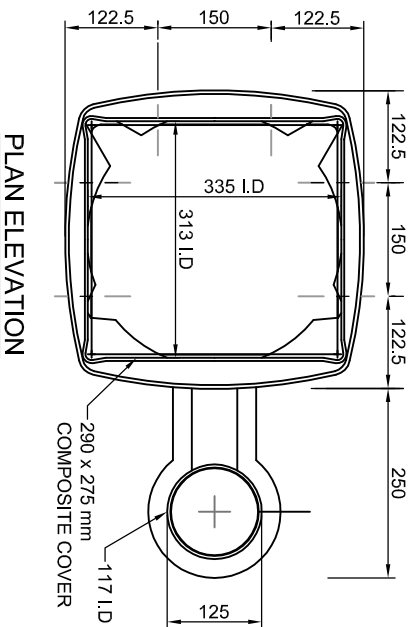
N.T.S

Drawing Title:

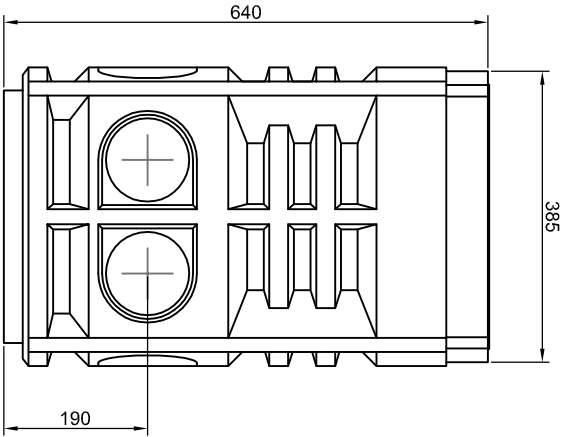
SD/1200/07

Rev

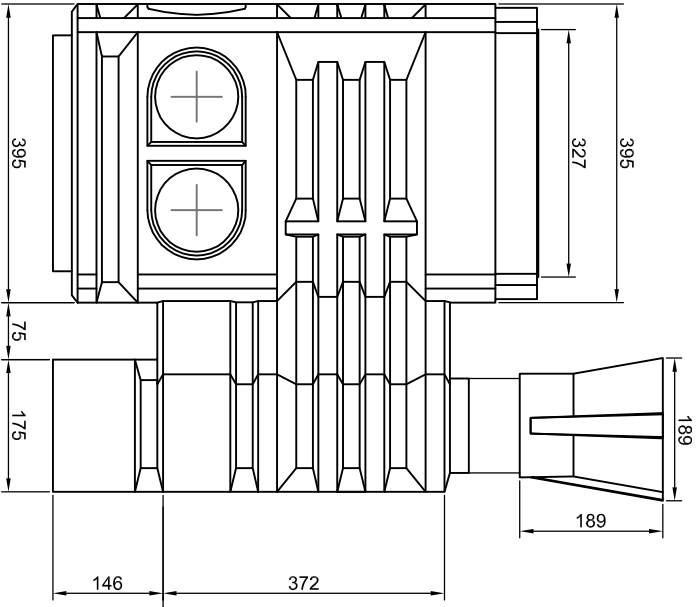
01



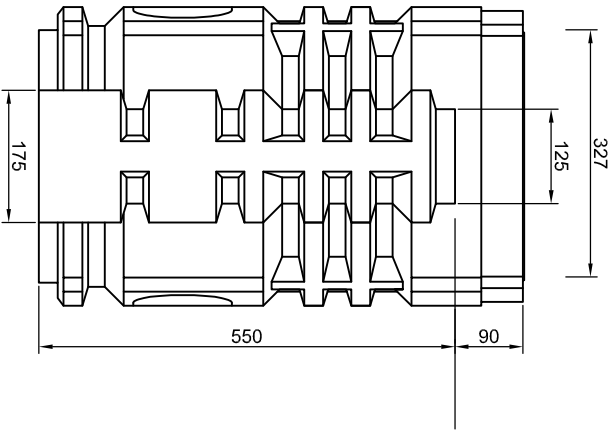
END ELEVATION



SIDE ELEVATION



END ELEVATION



NOTES

1. POLE BOXES SHALL BE SURROUNDED WITH 150 mm OF CONCRETE MIX ST2 AND BE SUPPORTED ON A SIMPLE CONCRETE FOOTING APPROXIMATELY 150 mm THICK WITH A SOAKAWAY OF 6 mm CLEAN STONE IF REQUIRED.
2. TO ENSURE TRAFFIC SIGNAL POLES AND POLE BOX ARE BOTH VERTICAL AND SECURE, THEY MUST BE INSTALLED TOGETHER AND SURROUNDED IN CONCRETE.
3. POLES SHOULD BE SECURED WITH CONCRETE AT PAVEMENT LEVEL, WHICH WILL BE APPROXIMATELY 150 mm DEEP.
4. THE BASE OF THE POLE SLEEVE CAN BE TRIMMED OFF IF REQUIRED TO PROVIDE ADDITIONAL SECURITY TO THE POLE.
5. ALL DIMENSIONS ARE IN MILLIMETRES.

SPECIFICATION CLAUSE

THE POLE BOX SHALL BE OF ONE-PIECE CONSTRUCTION AND ROTATIONALLY MOULDED. THE BOX SHALL MEET THE HIGHWAY REGULATION OF 450mm COVER OVER DUCTING PIPE. THE POLE BOX SHALL PRE-TREPANED KNOCKOUT AREAS TO ACCEPT (50mm/100mm) INTERNAL DIAMETER DUCTING. THE POLE BOX MUST BE CAPABLE OF INSTALLATION PRIOR TO POLE FIXING AND INSTALLED TO MANUFACTURERS DETAILS.