



**Walsall Council**

**Wolverhampton City Council**

**Dudley Metropolitan Borough Council**

**Sandwell Metropolitan Borough Council**

**Regeneration and Transport**

Drawing Title:
SPLASH STRIP AND CHEVRON BLOCKS FOR ROUNDABOUTS

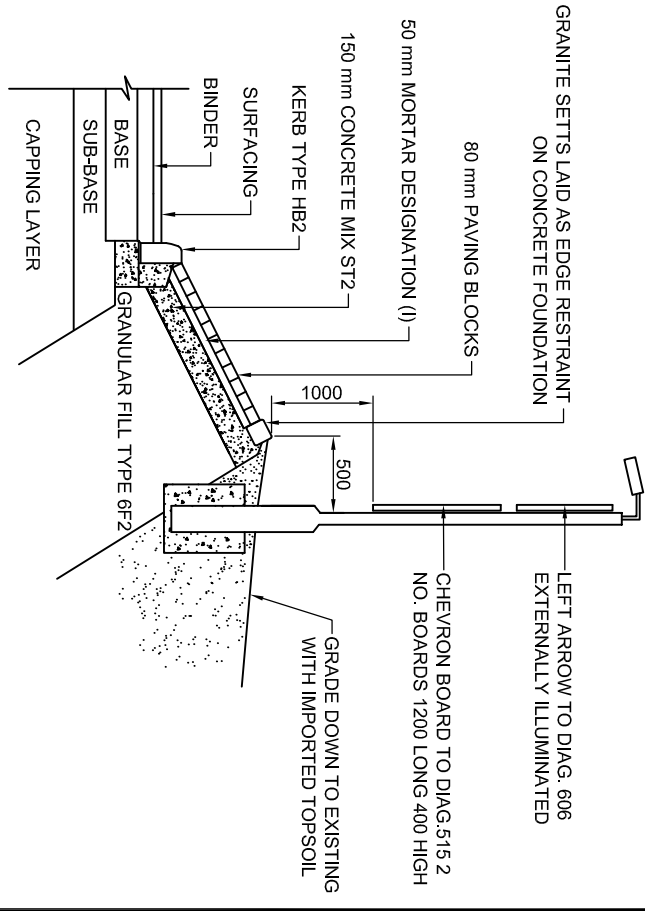
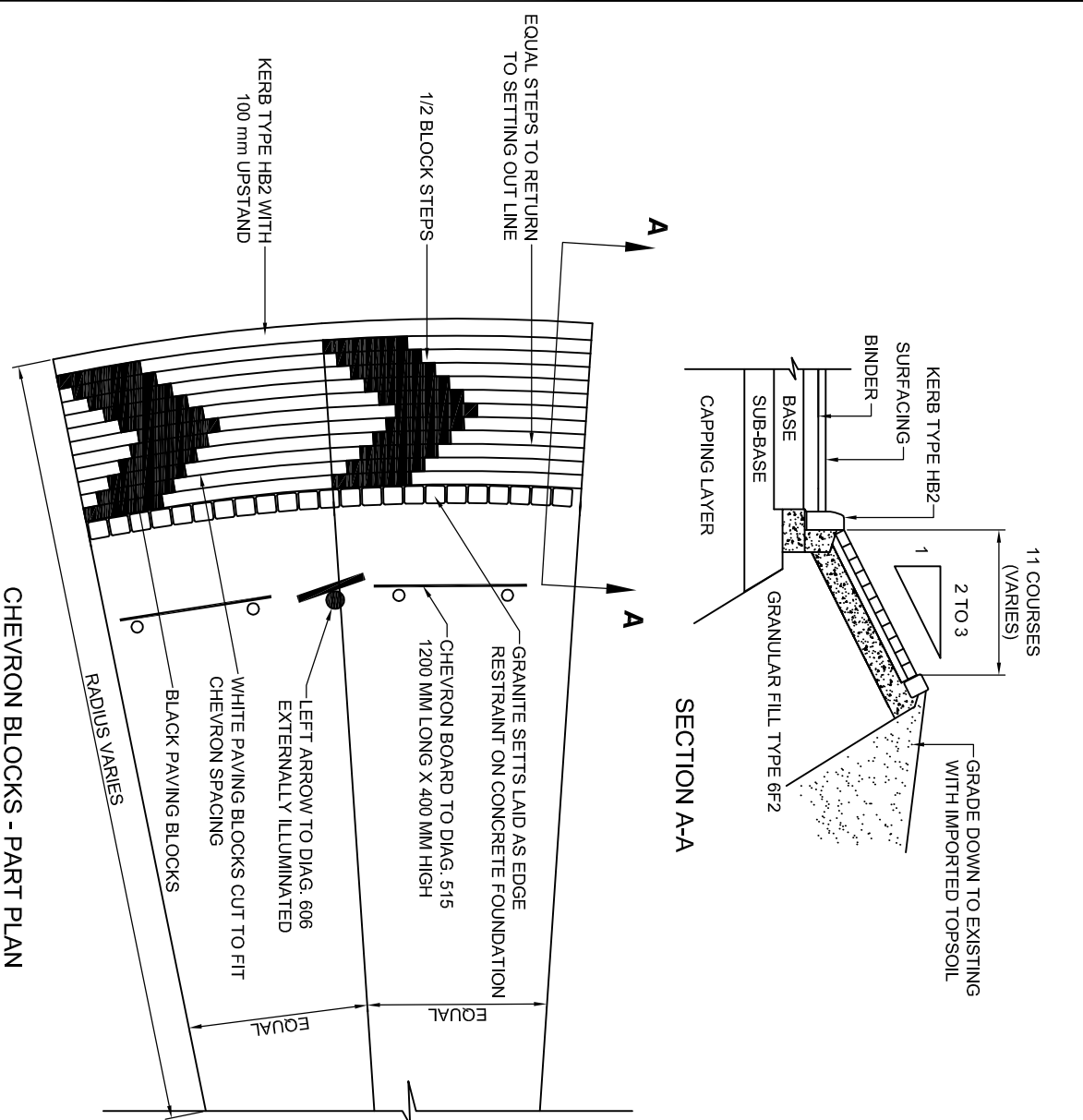
STANDARD DETAIL

DRAWN ID DATE
JUL/09

CHECKED JBF SCALE 1:50

Drawing Number
SD/1100/14

Rev
01



- NOTES**
1. WHITE PAVING BLOCKS SHALL BE 80x200x100 mm PLAIN CONCRETE WITH WHITE RESIN BONDED 'ARCLYT' AGGREGATE FINISH WITH MINIMUM 20% BALLOTTINI CONTENT SURFACE APPLIED AS SUPPLIED BY MARSHALLS OR SIMILAR APPROVED.
 2. BLACK PAVING BLOCKS SHALL BE 80x200x100 mm PLAIN CONCRETE WITH BLACK RESIN BONDED SURFACE FINISH AS SUPPLIED BY MARSHALLS OR SIMILAR APPROVED.
 3. CONCRETE BACKING SHALL BE KEPT 50mm BELOW TOP OF SETTS.
 4. GRANULAR FILL CLASS 6F2 SHALL COMPLY WITH THE REQUIREMENTS OF TABLE 6/1 OF THE SPECIFICATION.
 5. ROAD SIGN POSITIONS TO BE AGREED ON SITE WITH THE ENGINEER.
 6. THE LAYOUT OF THE CHEVRON BLOCKS IS BASED ON DIAG. 515.2 OF THE TSRGD 2002.
 7. ALL DIMENSIONS ARE IN MILLIMETRES.