

**Walsall Council**

**Wolverhampton City Council**

**Dudley Metropolitan Borough Council**

FRAMEWORK CONTRACT FOR HIGHWAY WORKS - MINOR WORKS CONTRACT

Drawing Title:  
**DETAILS OF STREET WORKS  
FOR PEDESTRIANS**

DRAWN  
DJB

CHECKED  
JBF

DATE  
JUL/09

SCALE  
NTS

Drawing Number  
**SD/100/03**

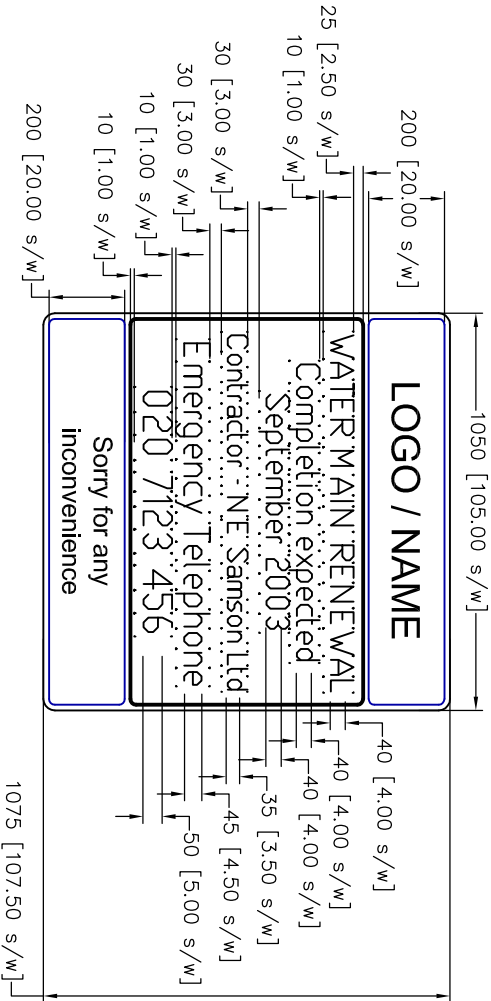
Rev  
**01**

LOGO / NAME

**WATER MAIN RENEWAL**  
Completion expected  
**September 2003**  
Contractor - NE Samson Ltd  
**Emergency Telephone  
020 7123 456**

Sorry for any  
inconvenience

- NOTES
1. ALL DIMENSIONS ARE IN MILLIMETRES UNLESS BRACKETED.
  2. BRACKETED DIMENSIONS ARE IN STROKE WIDTHS
  3. ALTERNATIVE x-HEIGHTS CAN BE USED WITH PRIOR APPROVAL.
  4. DATES TO BE AMENDED TO SUIT SCHEME. ALL INFORMATION TO BE AGREED WITH ENGINEER PRIOR TO MANUFACTURE.
  5. ALL TEXT TO BE TRANSPORT HEAVY.
  6. THE SCHEME DURATION SHALL BE AMENDED (IF NECESSARY) AS INSTRUCTED BY THE ENGINEER.
  7. THE SIGN BOARD SHALL BE ERECTED WITHIN 4 WEEKS OF ORDER IN WRITING FROM THE ENGINEER.
  8. THE SIGN FACE AND STRUCTURE ARE TO BE REMOVED WITHIN 14 DAYS OF SUBSTANTIAL COMPLETING OF THE SCHEME.
  9. NO OTHER SIGNS MAY BE FIXED TO THE STRUCTURE WITHOUT APPROVAL FROM THE ENGINEER.
  10. FOUNDATION CONCRETE TO BE MIX ST2 (MCHW).



SIGN FACE DETAILS (AT 100mm x-HEIGHT)

Scheme Ref. BC STD DETAILS			
Sign	Ref. TS:3	x-height	40.0
Letter colour	WHITE	SIGN FACE	
Background	RED	Width	1050mm
Border	WHITE	Height	1075mm
Material	Class 2 (12899-1:2001)	Area	1.13sq.m

POST DETAILS (AT 100mm x-HEIGHT)

POST(S) & FOUNDATIONS			
Mounting Height	2300mm	Bases	Combined
Number	2	Base Width	1300mm
Size	114.3x5CHS	Base Length	1100mm
Length	4025mm	Base Depth	600mm
Centres	700mm	Base Vol. o/a	0.86 m3
Illumination	No	Earth Cover	150mm