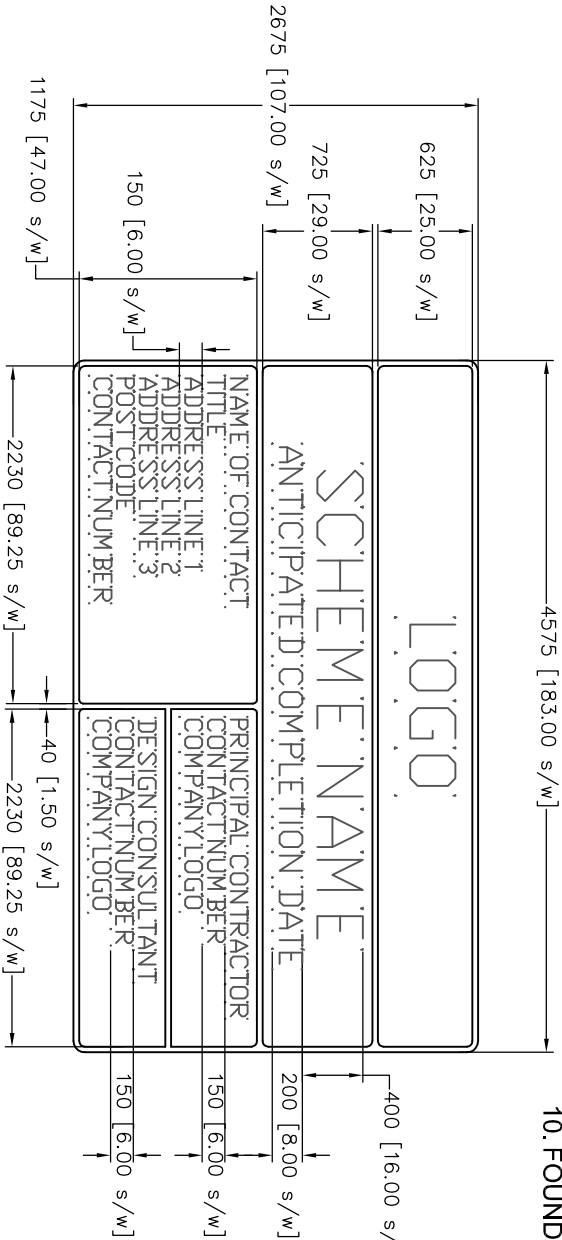


LOGO	
SCHEME NAME	
ANTICIPATED COMPLETION DATE	
NAME OF CONTACT TITLE ADDRESS LINE 1 ADDRESS LINE 2 ADDRESS LINE 3 POST CODE CONTACT NUMBER	PRINCIPAL CONTRACTOR CONTACT NUMBER COMPANY LOGO DESIGN CONSULTANT CONTACT NUMBER COMPANY LOGO



NOTES

1. ALL DIMENSIONS ARE IN MILLIMETRES UNLESS BRACKETED.
2. BRACKETED DIMENSIONS ARE IN STROKE WIDTHS.
3. ALTERNATIVE x-HEIGHTS CAN BE USED WITH PRIOR APPROVAL.
4. APPROVAL MUST BE GIVEN PRIOR TO MANUFACTURE.
5. ALL TEXT TO BE TRANSPORT HEAVY EXCEPT THAT CONTAINED WITHIN LOGOS.
6. CONTRACTOR MUST PROVIDE OFFICE CONTACT NUMBER, SITE CONTACT NUMBER AND EMERGENCY CONTACT NUMBER.
7. THE SIGN BOARD SHALL BE ERECTED WITHIN 4 WEEKS OF ORDER IN WRITING FROM THE ENGINEER.
8. THE SIGN FACE AND STRUCTURE ARE TO BE REMOVED WITHIN 14 DAYS OF SUBSTANTIAL COMPLETION OF THE SCHEME.
9. NO OTHER SIGNS MAY BE FIXED TO THE STRUCTURE WITHOUT APPROVAL FROM THE ENGINEER.
10. FOUNDATION CONCRETE TO BE MIX ST2 (MCHW).

SIGN FACE DETAILS (AT 100mm x-HEIGHT)

Scheme Ref.	FRAMEWORK CONTRACT – MINOR
Sign	Ref. 100/01
Letter colour	BLACK
Background	WHITE
Border	BLACK
Material	Class 1 (12899-1: 2001)
	Area 12.24sq.m

POST DETAILS (AT 100mm x-HEIGHT)

POST(S) & FOUNDATIONS			
Mounting Height	2300mm	Bases	Combined
Number	3	Base Width	4500mm
Size	193.7x6.3CHS	Base Length	1900mm
Length	6225mm	Base Depth	1200mm
Centres	1700mm	Base Vol. o/a	10.26 m ³
Illumination	No	Earth Cover	150mm

FRAMEWORK CONTRACT FOR HIGHWAY WORKS - MINOR WORKS CONTRACT

**Walsall Council**

**Wolverhampton City Council**

**Dudley**

Drawing Title:
SCHEME INFORMATION BOARD

DRAWN	DJB	DATE	JUL/09
CHECKED	JBF	SCALE	NTS

Drawing Number
SD/100/01

Rev
01