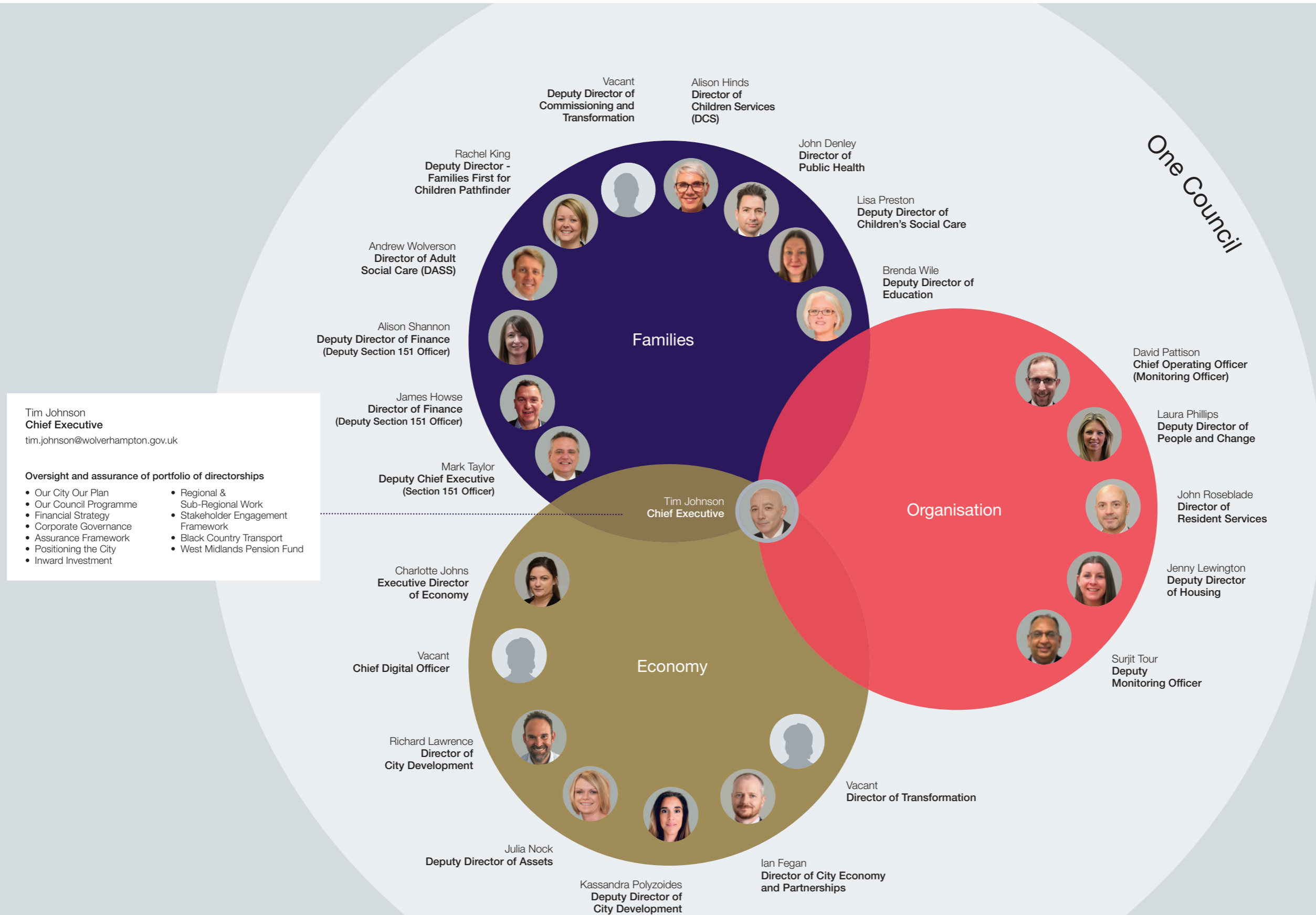


City of Wolverhampton Council

Our Senior Team





David Pattison
Chief Operating Officer (Monitoring Officer)

david.pattison@wolverhampton.gov.uk

- Monitoring Officer
- Overall responsibility for Democracy
- Solicitor to the Council
- Deputy Electoral Registration Officer
- Deputy Returning Officer - Elections & Referenda
- Senior Information Risk Owner - Governance
- Lead on Climate Action
- Overall responsibility for services within organisation theme



Surjit Tour
Deputy Monitoring Officer

- Democratic Services
- Mayoral and Councillors
- Civic Support



Tim Munro
Head of Service Health and Safety

tim.munro@wolverhampton.gov.uk

- Strategic Health and Safety Action Plan
- Consult/advise managers and employees on matters of health & safety
- Produce and implement health & safety policies
- Undertake health & safety audits and safety inspections
- Accident investigation / analysis and RIDDOR reports
- Health & safety training
- Potentially Violent Persons Register
- Health & safety support to education services and maintained schools
- Strategic Health Safety and Wellbeing Board
- Liaison with health & safety enforcement bodies
- Safety advice at public events
- Resilience and Emergency Planning



John Roseblade
Director of Resident Services

john.roseblade@wolverhampton.gov.uk

- City Transport
- Highways
- Environmental Services
- Parks
- Bereavement Services
- Coroner
- Waste & Recycling
- Fleet
- Passenger Transport
- Environmental Health
- Trading Standards
- Licensing
- Housing
- Housing SRO



Laura Phillips
Deputy Director of People and Change

laura.phillips@wolverhampton.gov.uk

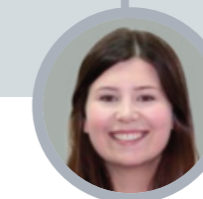
- Our People Strategy
- People Development & Experience
- People Policy & Strategy
- Trade Unions
- Support Services
- Projects & Change
- Strategic and Operational People Advice/Support
- Apprenticeships (Council & City)



Tracey Christie
Head of Legal Services

tracey.christie@wolverhampton.gov.uk

- Head of Legal Services
- Deputy Monitoring Officer
- Civil Litigation
- Childcare Law
- Property and Contractual Law
- Regulatory Law
- Planning Law
- Prosecutions
- Governance Advice
- Solicitor to WMPF
- Proper Officer for Local Government Act Functions
- Council Registrar for Local Land Charges



Laura Collings
Head of Policy and Strategy

laura.collings@wolverhampton.gov.uk

- Strategy and Policy Development
- Thematic Planning
- Strategic Project and Programme Management
- System Redesign Strategic Lead
- Regional Policy Oversight including WMCA
- Consultation and Engagement Strategy



Perminder Balu
Head of Green Cities and Circular Economy

perminder.balu@wolverhampton.gov.uk

- 2028 Net Zero Action Plan
- 2041 Net Zero Strategy
- Circular Economy
- Carbon Management Plan
- Energy Strategy
- Citizens Assembly 2023/24
- District Heat Network
- Net Zero Neighbourhood
- Local Area Energy Plan
- Retro-Fit



Laura Gittos
Head of Governance

laura.gittos@wolverhampton.gov.uk

- Democratic Services
- Scrutiny
- Councillor Enquiries
- Electoral Services
- Civic Support inc. Mayoral and Councillors

City of Wolverhampton Council

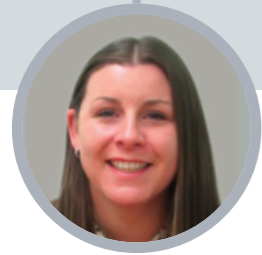
Resident Services Leadership Team



John Roseblade
Director of Resident Services

john.roseblade@wolverhampton.gov.uk

- City Transport
- Highways
- Environmental Services
- Parks
- Bereavement Services
- Coroner
- Waste & Recycling
- Fleet
- Passenger Transport
- Environmental Health
- Trading Standards
- Licensing
- Housing
- Housing SRO



Jenny Lewington
Deputy Director of Housing

jenny.lewington@wolverhampton.gov.uk

- New Housing Development
 - Council Housing
 - Affordable Housing
 - New Market Housing
- Estate Based Regeneration
- Housing Strategy and Policy
- Asset Management and Financial Planning
- Managing Agents – Delivery Plans Performance and Governance
- Private Rented Sector Housing Improvement
- Housing Assistance programmes
- Fuel Poverty and Energy Efficiency
- Homelessness
- Private Sector Housing



Steve Woodward
Head of Environmental Services

steve.woodward@wolverhampton.gov.uk

- Grounds Maintenance
- Parks and Open Spaces Management
- Arboriculture
- Bereavement and Crematoria Services
- Collection and Delivery of Residential Bins
- Bulky, Commercial and Assisted Waste Collection
- Household Recycling Centres
- Fly Tipping/Rubbish on the Streets
- Pest Control
- Waste Transformation Programme
- Waste & Recycling Strategy
- Waste Disposal & Recycling Contracts
- Strategic Waste Infrastructure
- Commercial and Garden Waste
- Business Development



Vacant Commercial Regulation Manager

- Licensing Strategy and Policy
- Premises/Alcohol Licensing – General Licensing
- Street Trading
- Environmental Health - Food Safety and Health & Safety
- Environmental Permits
- Commercial Noise
- Trading Standards - Weights & Measures
- Markets Service
- Wholesale Market
- Private Sector Housing
- HMO licensing
- Empty Properties
- Taxi Licensing & National Taxi Compliance
- Public Events Health & Safety
- Sports Ground Safety



Karen Beasley
Head of Housing Development

karen.beasley@wolverhampton.gov.uk

- New build Council Housing
- New Build Grants and Funding
- Council Estate/Housing Area Renewal and Regeneration
- Oversight of Asset Management and Housing Investment
- Engagement with Homes England
- Utilisation of S106 and RTB 1-4-1 Receipts
- Affordable Housing Conversion Programme
- Council Property Buy-Back Scheme
- HRA Non-Residential Asset Register
- HRA Asset Lease / Leaseholder Management



John Charles
Head of Network Management

john.charles@wolverhampton.gov.uk

- UTC/Black Country Shared Service
- Roadworks Management
- Permits and Licensing
- Parking Services
- School Crossings
- Road Safety
- Traffic Regulation and Event Management
- Highways Assets Management and Structures
- Street Lighting
- Planned and Reactive Highway Maintenance
- Flood Risk Management
- Drainage
- Winter Maintenance



Marianne Page
Head of Strategic Transport

marianne.page@wolverhampton.gov.uk

- Strategic Transport
- Major Projects
- Sustainable Transport
- Black Country Regional Partnerships
- Black Country Route Managers
- Transport Planning



Beth Cooper
Transport and Fleet Manager

beth.cooper@wolverhampton.gov.uk

- Passenger Transport
- Fleet Services
- Workshop
- Fleet Transformation

City of Wolverhampton Council

People and Change Leadership Team



Laura Phillips
Deputy Director of People and Change

laura.phillips@wolverhampton.gov.uk

- Our People Strategy
- People Development & Experience
- People Policy & Strategy
- Trade Unions
- Support Services
- Projects & Change
- Strategic and Operational People Advice/Support
- Apprenticeships (Council & City)



Adrian Turner
Branch Secretary - Unison

adrian.turner@wolverhampton.gov.uk



Suky Mattu
Head of People Services

sukhvinder.mattu@wolverhampton.gov.uk

- People Policy & Strategy
- People Transformation Programme
- Recruitment and Retention
- People Support Desk
- Pay and Reward
- People Operational Advice/support
- Trade Unions
- Employee Relations



Steven Cartwright
Head of Projects and Change

steven.cartwright@wolverhampton.gov.uk

- Project, Programme and Change Management
- Project Management Office (PMO)
- Project/Programme Assurance
- Business Analysis
- Business Improvement



Julia Goudman
Head of Support Services

julia.goudman@wolverhampton.gov.uk

- Support Services
- Executive Support
- Mailroom



Lucy Searle
Service Development Manager

lucy.searle2@wolverhampton.gov.uk

- Service Development and Improvement
- Service Performance and Assurance



Joanna Grocott
Head of People Development and Experience

joanna.grocott@wolverhampton.gov.uk

- Our People Strategy Development and Delivery
- People Development
- People Experience
- Council Apprenticeships
- City Wide Apprenticeship Strategy
- People Transformation Programme



Charlotte Johns
Executive Director of Economy

charlotte.johns@wolverhampton.gov.uk

- Strategic Lead for Economy Portfolio
- City Economy & Partnerships
- City Development
- Transformation
- WM Strategic Migration Partnership
- Adult Education & Skills Portfolio
- Driven by Digital, New Technologies e.g. AI
- Strategic relationships with key stakeholders, partners including businesses, government agencies, communities, LA's, Universities, regeneration partners, WMCA



Ian Fegan
Director of City Economy and Partnerships

ian.fegan@wolverhampton.gov.uk

- Corporate Relationship Management
- Media Enquiries
- Promoting the City
- Arts and Culture
- City Events
- Digital Engagement / Social Media
- Internal Communication & Engagement
- Corporate Campaign Planning
- Events Strategy & Delivery
- City Marketing
- Wolverhampton Pound
- External Funding



Richard Lawrence
Director of City Development

richard.lawrence@wolverhampton.gov.uk

- City Development
- City Planning
- City Strategic Projects
- Assets



Vacant
Director of Transformation

- Data driven decision making, insight, performance, and analytics.
- Digital transformation
- Customer Services, Registrars & Archives
- Equality, Diversity, and Inclusion



Dally Panesar
Head of West Midlands Strategic Migration Partnership

dally.panesar@wolverhampton.gov.uk

- Leadership and management of the Cross-Sector Partnership on Migration Issues for the West Midlands Region, hosted by City of Wolverhampton Council



Brenda Wile
Deputy Director - Education

brenda.wile@wolverhampton.gov.uk

- Inclusion Support
- School Improvement
- Early Years
- Traded Services
- Post 16
- Alternative Provision
- Special Educational Needs and Disability
- School Organisation and Admissions
- Education Performance
- Skills
- Adult Education



Ian Fegan
Director of City Economy and Partnerships

ian.fegan@wolverhampton.gov.uk

- Corporate Relationship Management
- Media Enquiries
- Promoting the City
- Arts and Culture
- City Events
- Digital Engagement / Social Media
- Internal Communication & Engagement
- Corporate Campaign Planning
- Events Strategy & Delivery
- City Marketing
- Wolverhampton Pound
- External Funding



Chris Kirkland
Head of City Investment

christopher.kirkland@wolverhampton.gov.uk

- Inward Investment Strategy
- Capital Investments
- West Midlands Growth Company (WMGC)
- Key Accounts
- Tourism Trade
- Investment Delivery



Richard Wyatt
Head of Communications

richard.wyatt@wolverhampton.gov.uk

- PR and Marketing Management
- Integrated Strategic Corporate Communications
- Strategic Reputational Management
- Key Strategic Campaigns
- Internal Communications and Staff Engagement
- Stakeholder Management
- Media Relations
- City Promotion



Heather Clark
Head of City Economy and External Funding

heather.clark2@wolverhampton.gov.uk

- External Funding including Strategic Project and Programme Pipeline
- Co-ordination of Strategic Funding Activity
- Digital co-ordinator including: Digital Infrastructure, Digital Inclusion and Innovation
- Visitor Experience



Louise West
Strategic Lead - Wolverhampton Pound

louise.west@wolverhampton.gov.uk

- Wolverhampton Pound approach
- Social Value
- Social Economy
- Community wealth building
- Anchor Network

City of Wolverhampton Council

Regeneration Leadership Team



Richard Lawrence
Director of City Development

richard.lawrence@wolverhampton.gov.uk

- City Development
- City Strategic Projects
- City Planning
- Assets



Kassandra Polyzoides
Deputy Director of City Development

kassandra.polyzoides@wolverhampton.gov.uk

- City Development
- City Planning
- Our Future City Plan



Julia Nock
Deputy Director of Assets

julia.nock@wolverhampton.gov.uk

- City Assets and Facilities
- One Public Estate
- Assets Review
- Workplace Strategy



Vacant
Head of City Development

- City Centre Regeneration
- Growth Corridor Programme
- Connected Places
- Major Project Pipeline



Stephen Alexander
Head of City Planning

stephen.alexander@wolverhampton.gov.uk

- Planning Policy
- Planning Applications
- Planning Compliance
- Building Control
- Historic Environment



Stuart Rutherford
Head of Assets

stuart.rutherford@wolverhampton.gov.uk

- Integrated Asset Management Plan
- Estates Service for Corporate, Commercial and Education Portfolios
- Strategic Asset Plan
- Statutory Property Compliance
- Estate Management (including commercial premises, disposal of surplus land and property assets)
- One Public Estate
- Our Assets Programme



Julie Bell-Barker
Head of Projects and Works

julie.bell-barker@wolverhampton.gov.uk

- Construction Project and Programme Management
- Cost Consultancy and Design
- Engineering Services
- Structural and Geotechnical Services
- Capital Projects (New Build and Refurbishment)
- Planned Maintenance
- Compliance and Reactive Maintenance



Chris East
Head of Facilities

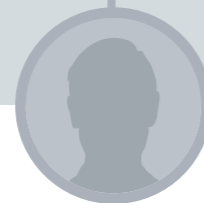
chris.east@wolverhampton.gov.uk

- Catering
- Cleaning
- Facilities Management (Civic and Corporate)
- Service Development – including free school meals



Vacant
Director of Transformation

- Data Driven Decision Making, Insight, Performance, and Analytics
- Digital transformation
- Customer Services, Registrars and Archives
- Equality, Diversity, and Inclusion



Vacant
Chief Digital Officer

- Lead for Digital and Data Strategy including AI



Lamour Gayle
Head of Customer Engagement and Registrars

lamour.gayle2@wolverhampton.gov.uk

- Customer Contact Centre
- Receptions
- Customer Relationship Management
- Customer Engagement
- Register Office (births, deaths, marriages, civil partnerships and citizenship)
- Service Development
- Archives



Jin Takhar
Head of Equality, Diversity and Inclusion

j.in.takhar@wolverhampton.gov.uk

- Corporate Equality, Diversity and Inclusion (EDI) Strategy, Policies and Procedures
- Strategic, Policy and Transformational Lead on all matters related to EDI across the Council
- Council wide Equality Impact Assessments and Analysis
- Partnership working with Regional and National Agencies as well as Local Partnerships including EDI
- Community / Stakeholder Engagement Forums
- Staff Engagement Forums
- Council wide EDI Peer Assessments and National Accreditations
- Management of the Council's SLA with Wolverhampton Homes and Linked Bodies



Anna Zollino-Biscotti
Head of Information Governance and Customer Assurance

anna.zollino-biscotti@wolverhampton.gov.uk

- Information Governance (strategic & operational)
- Data Protection
- Freedom of Information/ Environmental Regulations
- Information Sharing
- Records Management
- Information Security
- Customer Liaison
- LGSCO/HO Enquiries
- Ombudsman Link Officer



Jai Ghai
Head of Digital and IT

jai.ghai@wolverhampton.gov.uk

- ICT Programme and Project Management, delivering against corporate priorities and strategies
- Provision of Corporate ICT Service, enabling Agile Working
- Internet Provision
- Cyber Security
- Research and development of new technologies
- Digital Print Solutions - Provision of Print and Design Services



James Amphlett
Head of Data and Analytics

james.amphlett2@wolverhampton.gov.uk

- Data Analysis
- National and Regional Performance Monitoring
- Data Interpretation
- Performance Management
- Digital Dashboards Development and Promotion including Power BI
- Management of Information for Internal and External Purposes
- Benchmarking



Mark Taylor
Deputy Chief Executive (Section 151 Officer)

mark.taylor@wolverhampton.gov.uk

- Section 151 Officer
- Corporate Parenting
- Safer Wolverhampton Partnership

Chair of
WV Living Board
marktaylor@
wvliving.co.uk

City of Wolverhampton
College - Vice Chair
taylorma@
wolvcoll.ac.uk



James Howse
Director of Finance

james.howse@wolverhampton.gov.uk

- Deputy Section 151 Officer
- Audit Services
- Strategic Financial Advice & Support
- Revenue & Benefits
- The Hub
- Financial & Investment Strategy
- Procurement Service
- Commercial Services



Andrew Wolverson
**Director of Adult
Social Care (DASS)**

andrew.wolverson@wolverhampton.gov.uk

- Assessment and Support Planning for Adults
- Adult Safeguarding/Multi-Agency Safeguarding Hub
- Adult Care Provision
- Principal Social Worker
- Better Care/Integrated Working with Health
- Community Financial Support
- Adults Commissioning
- Approved Mental Health Practitioners and Assessments
- Independent Living Services
- Carers Support
- Adults Improvement



John Denley
**Director of
Public Health**

john.denley@wolverhampton.gov.uk

- Public Health
- Community Safety & Cohesion
- Health Improvement
- Health Protection
- Intelligence & Evidence
- WV Active & Sports Health Partnerships
- Workforce Wellbeing
- Public Health Commissioning
- Personal, Social, Health & Economic Education
- Outdoor Education
- Wolverhampton for Everyone
- Homelessness Prevention Strategy



Alison Hinds
**Director of Children Services
(DCS)**

alison.hinds@wolverhampton.gov.uk

- Adult Education and Duty Team
- Child Transformation Work
- Children & Young People in Care
- Children in Need & Child Protection
- Children's Commissioning
- Children's Partnership Boards
- Connexions Service
- Disabled Children & Young People
- Early Intervention
- Education Psychology
- Family for Children
- Family Hubs
- Financial Well Being
- Learning Communities
- Multi Agency Safeguarding Hub
- Post 16 Education
- Safeguarding
- School Improvement
- School Organisation and Admissions
- SEND & Inclusion Support
- Skills
- Specialist Support
- Wolves at Work; skills, jobs and careers
- Youth Justice Service
- Youth Offending



James Howse
Director of Finance

james.howse@wolverhampton.gov.uk

- Deputy Section 151 Officer
- Audit Services
- Strategic Financial Advice & Support
- Revenue & Benefits
- The Hub
- Financial & Investment Strategy
- Procurement Service
- Commercial Services



Alison Shannon
Deputy Director of Finance

alison.shannon@wolverhampton.gov.uk

- Deputy Section 151 Officer
- Medium Term Financial Planning
- Technical Accounting and Reporting
- Financial Modelling
- Treasury Management
- Strategic Financial Advice and Support



Ian Cotterill
Head of Audit

ian.cotterill@wolverhampton.gov.uk

- Internal Audit
- Risk Management
- Insurance
- Counter Fraud
- Investigations



Darren Herries
Head of The Hub

darren.herries@wolverhampton.gov.uk

- Payment and Purchasing
- Banking and Income Management
- Payroll and Pensions
- Quality & Improvement
- HR Administration



Tracey Richards
Head of Revenues and Benefits

tracey.richards@wolverhampton.gov.uk

- Council Tax Administration
- Business Rates
- Debt Management
- Housing Benefit/Council Tax Support



John Thompson
Head of Procurement

john.thompson@wolverhampton.gov.uk

- Procurement and Contract Management
- Provision of Procurement Training
- Management of Procurement Strategy and Operating Protocol
- Identification of Savings Opportunities in External Spend
- Maintenance of Corporate Contracts Register



Parvinder Uppal
Head of Commercial Services

parvinder.uppal@wolverhampton.gov.uk

- Leadership, advice and support on commercial issues
- Delivery of the commercial aspects
- Implementation of commercial strategy and plans for trading opportunities
- Strategic contracts
- Opportunities for savings and alternative service delivery models
- Responsibility for commercial training
- Contract Management

City of Wolverhampton Council

Adult Social Care Leadership Team



Andrew Wolverson
Director of Adult Social Care (DASS)

andrew.wolverson@wolverhampton.gov.uk

- Assessment and Support Planning for Adults
- Adult Safeguarding/Multi-Agency Safeguarding Hub
- Adult Care Provision
- Principal Social Worker
- Better Care/Integrated Working with Health
- Community Financial Support
- Adults Commissioning
- Approved Mental Health Practitioners and Assessments
- Independent Living Services
- Carers Support
- Adults Improvement

Shared role
across Adult
and Children



Vacant
Deputy Director - Commissioning and Transformation

- Principal Social Worker and Quality Assurance
- Commissioning
- Partnerships
- Co-production, Engagement and Participation
- Information, Advice and Support Services
- Children's and Adult Transformation Programmes
- Children's and Adult Improvement Work

Shared role
across Adult
and Children

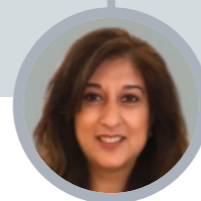


Role includes support to Adult Social Care Heads of Service

Jenny Rogers
Head of Service for Families First for Children Pathfinder & Principal Social Worker

jennifer.rogers@wolverhampton.gov.uk

- Matrix Working Across Adults and Children's Services
- Quality Assurance
- Policy and Procedures
- Workforce Development Programme
- Social Work Development Board
- Social Work Performance and Practice Standards
- Personalisation



Meena Dulai
Head of Adult Improvement

meena.dulai@wolverhampton.gov.uk

- Transforming Adult Social Care
- Lead on Corporate Projects
- Lead on Whole Family Approach
- Strategic Commissioning for Adult Social Care
- Strategic Multi-Agency Safeguarding Hub Development
- Support and Deputise for Director of Adult Services



Rachael Murphy
Head of Adult Services and Health Partnerships

rachael.murphy@wolverhampton.gov.uk

- Lead for Acute and Non-Acute Hospitals
- Discharge to Assess (D2A) Project
- Assistive Technology
- Community Occupational Therapy Service
- Sensory Impairment Service
- Independent Living Service
- Assessment and Case Management for Older People, People with Physical Disabilities and People with Learning Disabilities (East and Hospital Team)
- Lead for Older People and Mental Health



Paula Morris
Head of Adult Services and Communities

paula.morris@wolverhampton.gov.uk

- North Locality and West Locality
- Adult Social Work Teams
- Forensic LD Social Work Lead
- Transition Link to Disabled Children and Young People Team/SEND
- Regional Transforming Care Programme
- Lead for Disability and Autism
- Housing Liaison



Sandra Ashton-Jones
Head of Mental Health

sandra.ashton-jones@wolverhampton.gov.uk

- Meet the Legal Requirements of the Mental Health Act / Approved Mental Health Professional
- Mental Health Team
- Sub Regional Mental Health Developments
- Operational Safeguarding Lead
- Adult Multi-Agency Safeguarding Hub
- Lead for Carers/Carer Support Team
- Community Offer/Community Support Team



Tom Denham
Head of Adult Provision

tom.denham@wolverhampton.gov.uk

- Residential Services
- Short Breaks
- Community Pathways
- Day Opportunities
- Reablement/Enablement Services
- Transport Liaison
- Employment Liaison
- Community Equipment Service
- CQC Nominated Individual



Helen Winfield
Head of Community Financial Support

helen.winfield@wolverhampton.gov.uk

- Financial Assessments and Billing
- Welfare Rights
- Macmillan Welfare Rights
- Direct Payments
- Destitute Plus Provision Lead
- NHS Continuing Healthcare Lead
- Personalised Support (including Brokerage)



John Denley
Director of Public Health

john.denley@wolverhampton.gov.uk

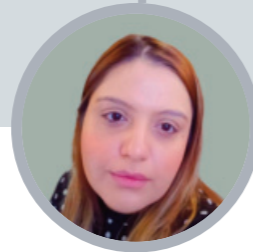
- Public Health
- Community Safety & Cohesion
- Health Improvement
- Health Protection
- Intelligence & Evidence
- WV Active & Sports Health Partnerships
- Workforce Wellbeing
- Public Health Commissioning
- Personal, Social, Health & Economic Education
- Outdoor Education
- Wolverhampton for Everyone
- Homelessness Prevention Strategy



Kate Warren
Consultant in Public Health

kate.warren@wolverhampton.gov.uk

- System Leadership
- Strategic Population Healthcare Planning
- Commissioning Support
- Intelligence and Data Science
- NHS Commissioning Policy
- NHS Provider Policy
- Building Public Health capacity



Ainee Khan
Health Protection Consultant

ainee.khan@wolverhampton.gov.uk

- Infection Prevention
- Healthcare Public Health
- Adult Mental Health
- Adult Social Care Link
- CCG Link
- NHS Health Checks/ Cardiovascular Risk



Bal Kaur
Starting and Developing Well (Children and Young People) Consultant

bal.kaur@wolverhampton.gov.uk

- Infant Mortality
- Maternal Health and Wellbeing
- Healthy Child Programme
- Child Health and Early Years Development
- Oral Health
- Childhood Immunisations
- Healthy Weight (NCMP)
- Mental Health and Resilience of CYP
- PSHE lead in Education Settings
- Sexual Health across life course
- Drug and Alcohol across life course
- Licensing
- PH Commissioning Cycle support, including assessing needs, planning, prioritising and monitoring



Lynsey Kelly
Head of Communities

lynsey.kelly@wolverhampton.gov.uk

- Community Safety Lead
- Safer Wolverhampton Partnership Board (Local Police and Crime Board)
- Anti-Social Behaviour Team
- Community Safety and Harm Reduction Strategy
- Preventing Gang Involvement and Youth Violence Strategy
- Programme Delivery and Service Commissioning
- Counter Terrorism / Channel Lead
- Modern Slavery Lead
- Community Cohesion Lead
- Violence Against Women and Girls
- VCS commissioning
- Place Based Approach
- Homelessness & Migration, and Migrant Health
- Teenage Pregnancy



Richard Welch
Head of Partnerships

richard.welch@wolverhampton.gov.uk

- Leisure
- Libraries and Community Buildings
- Sport and Physical Activity Strategy
- Behavioural Science
- Life Expectancy - Working Age Adults

City of Wolverhampton Council

Children Services Leadership Team



Alison Hinds
Director of Children Services (DCS)

alison.hinds@wolverhampton.gov.uk

- Adult Education and Duty Team
- Child Transformation Work
- Children & Young People in Care
- Children in Need & Child Protection
- Children's Commissioning
- Children's Partnership Boards
- Connexions Service
- Disabled Children & Young People
- Early Intervention
- Education Psychology
- Family for Children
- Family Hubs
- Financial Well Being
- Learning Communities
- Multi Agency Safeguarding Hub
- Post 16 Education
- Safeguarding
- School Improvement
- School Organisation and Admissions
- SEND & Inclusion Support
- Skills
- Specialist Support
- Wolves at Work; skills, jobs and careers
- Youth Justice Service
- Youth Offending



Brenda Wile
Deputy Director - Education

brenda.wile@wolverhampton.gov.uk

- Inclusion Support
- School Improvement
- Early Years
- Traded Services
- Post 16
- Alternative Provision
- Special Educational Needs and Disability
- School Organisation and Admissions
- Education Performance
- Skills
- Adult Education



Lisa Preston
Deputy Director - Children's Social Care (Interim)

lisa.preston@wolverhampton.gov.uk

- Children in Need & Child Protection
- Disabled Children & Young People
- Youth Offending
- Children & Young People in Care
- Early Intervention
- Specialist Support
- Regional Adoption Agency



Rachel King
Deputy Director - Families First for Children Pathfinder

rachel.king@wolverhampton.gov.uk

- Leading on the DFE Families First for Children Pathfinder
- Developing Family Help
- Decisive Multi-agency Child Protection System
- Unlocking the Potential of Family Networks

Shared role across Adult and Children



Vacant Deputy Director - Commissioning & Transformation

- Principal Social Worker and Quality Assurance
- Commissioning
- Partnerships
- Co-production, Engagement and Participation
- Information, Advice and Support Services
- Children's and Adult Transformation Programmes
- Children's and Adult Improvement Work



Helen Bakewell
Head of SEND and Inclusion

helen.bakewell@wolverhampton.gov.uk

- Special Educational Needs and Disability Early Identification and Support
- Special Educational Needs and Disability Assessment & Planning
- Vulnerable Learners
- Educational Welfare and Inclusion
- Virtual School
- Educational Psychology
- Specialist Commissioning



Phil Leivers
Head of Education Excellence

phil.leivers@wolverhampton.gov.uk

- Citizenship Literacy and Learning
- Continuing Professional Development for Schools
- Early Years
- Research and Assessment
- Safeguarding in Education
- School Governance
- School Improvement
- Standing Advisory Council on Religious Education



Bill Hague
Head of School Business and Support Services

bill.hague@wolverhampton.gov.uk

- Education Statutory and Traded Services
- School Organisation
- School Admissions
- Education Information and Communications Technology services
- Private Finance Initiative Contracts Management



Julie Obada
Head of Skills

julie.obada@wolverhampton.gov.uk

- Skills and Employability Strategy
- Connexions Service
- Black Country Impact
- Wolves at Work; skills, jobs and careers
- Youth Taskforce



Anna Place
Head of Adult Education

anna.place@wolverhampton.gov.uk

- Adult Education for the City
- Integration of Adult Education Wolverhampton (AEW) for City Learning Quarter (CLQ)
- West Midlands Adult and Community Learning Alliance (ACLA)



Cherry Iacono
Head of Strengthening Families

cherry.iacono@wolverhampton.gov.uk

- Multi Agency
- Safeguarding Hub/ Emergency Duty Team
- Child Protection
- Court Team
- Family Help



Jazmine Walker
Head of Children and Young People in Care

jazmine.walker@wolverhampton.gov.uk

- Children and Young People in Care
- Care Leavers
- Fostering
- Housing Support
- Disabled & Young People Teams
- Children's Homes



Celia Payne
Head of Specialist Support (Interim)

sonia.mahay@wolverhampton.gov.uk

- Children's Homes
- Intensive Family Support
- Family Group Conference
- Family Time
- Independent Visitor/ Mentors
- Youth Offending Team
- Power 2
- Missing Children
- Contextual Safeguarding and Exploitation
- Independent Reviewing Officers



Simon Green
Head of Adoption@Heart

simon.green@adoptionatheart.org.uk

- Recruitment and Assessment of Adopters
- Family Finding
- Adoption Support

Shared role across Adult and Children



Jenny Rogers
Head of Service for Families First for Children Pathfinder & Principal Social Worker

jennifer.rogers@wolverhampton.gov.uk

- Advanced Practitioners
- Social Worker Recruitment and Retention
- Social Worker - Continuing Professional Development
- Quality Assurance incl Policies and Procedures

Role includes support to Children's Social Care Heads of Service



Denise Williams
Service Manager to Family Hubs

denise.williams@wolverhampton.gov.uk

- Implementation of the City Wide Family Hub Model
- Partnership Engagement in the Family Hub Model
- Programme Coordinator for day to day operation of the 8 sites across the city

Role includes direct support to Director of Children Services



Rachel Brothwood
Executive Director of Pensions

rachel.brothwood@wolverhampton.gov.uk

- WMPF Corporate Plan
- Corporate Responsibility and Pension Fund Governance
- Stakeholder and Industry Engagement
- Fund Culture and People Strategy
- Financial and Risk Strategy



Shiventa Sivanesan
**Assistant Director
(Investment
Management and
Stewardship)**

shiventa.sivanesan@
wolverhampton.gov.uk

- Responsible Investment
- Climate Change Framework and Strategy, Climate Risk Reporting
- Development and Oversight of Management Arrangements
- Stewardship, Reporting and Disclosure
- Collaborative Engagement Initiatives



Paul Nevin
**Assistant Director
(Investment
Strategy)**

paul.nevin@
wolverhampton.gov.uk

- Investment Strategy Development and Implementation
- Strategic Asset Allocation
- Development and Oversight of Management Arrangements
- Portfolio Analysis and Reporting
- Investment Operations and Processing



Chris Manning
**Head of Finance
(Deputy Section
151 Officer)**

christopher.manning@
wolverhampton.gov.uk

- Pensions Fund Accounts
- Financial Reporting
- Fund Accounting
- Budget Management
- Treasury Management



Simon Taylor
**Assistant Director
(Pensions)**

simon.taylor2@
wolverhampton.gov.uk

- Funding Strategy, Employer Covenant and Risk
- Employer Services including Admissions and Exit Planning
- Pensions Administration Strategy
- Member Information and Events
- Customer Engagement and Customer Services



Amy Regler
**Head of
Operations**

amy.regler@
wolverhampton.gov.uk

- Fund IT/Systems Support
- LGPS Technical Support
- System Developments
- Benefit Processing and Determinations
- LGPS Pension Payroll



Rachel Howe
**Head of
Governance,
Risk and Assurance**

rachel.howe@
wolverhampton.gov.uk

- Fund Governing Bodies
- Legal, Risk & Compliance
- Regulatory Change and Statutory Reporting
- Business Continuity
- Information Governance and Data Management



Vacant
**Head of People
and Corporate
Services**

- Recruitment & Resourcing
- People & Organisational Development
- Wellbeing & Inclusion
- Corporate Communications and Graphic Design
- Facilities Management