

Tree and Woodland Strategy

for Wolverhampton 2019 – 2029

City of Wolverhampton Council
manages approximately
450,000 trees

These are on our streets, in parks
and cemeteries and on land managed
by Wolverhampton Homes
(excluding tenants' gardens)

**3.9% of the city is
covered by woodland**

(about 274 hectares)

Around **120 hectares** of our
woodland are designated
Sites of Interest or
Local Interest for **Nature Conservation**

**70 hectares of
Millennium Forest**

have been planted

**There are 750
Tree Preservation Orders**
(TPOs)

Our objectives are to:



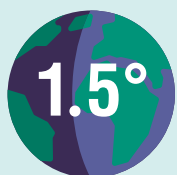
Protect the existing stock of trees
and woodland, including those
with TPOs



Ensure coverage in different
locations; street trees, parks and
green spaces, town and city centres



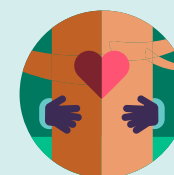
Plant more trees,
woodland and hedgerows



Reduce climate change
by capturing carbon



Help the city adapt to
climate change



Work with schools and
community groups



Improve biodiversity by
planting UK native species



Support regeneration and
improve the image of the city



Improve public health by
providing access to trees



Support sustainable
procurement of timber, including
recycled products



Recognise the cultural and
historical importance of trees



Contribute to the development and
delivery of wider initiatives, including
the Black Country Garden City